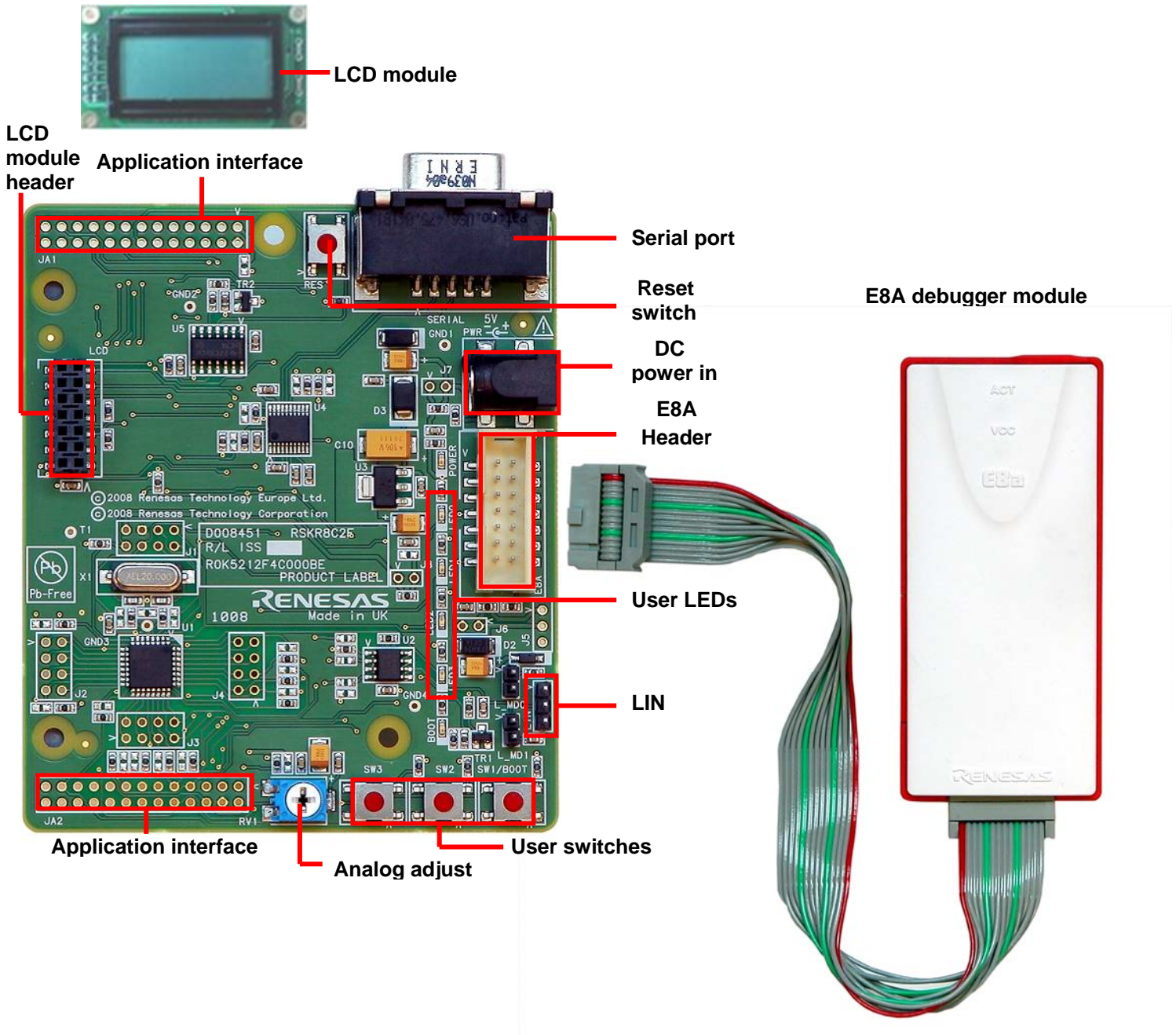


# Quick Start

# Renesas Starter Kit for R8C/2F



## 1. Installation

Do not connect the E8A debugger hardware until the software support has been installed.

1. Insert the CD into your computer's CD-ROM drive. The CD should automatically run the installation program. If the installer does not start, browse to the CD root folder and double click on 'setup.exe'.
2. The installer will ask you which language is to be used, please choose the appropriate one.
3. On the first screen of the installer proper, click <Next>.
4. The License Agreement will be shown, click <Yes>.
5. The next screen asks you to pick the world region – please select and click <Next>.
6. Select the RSK you wish to install and click <Next> to continue.
7. The destination folders are specified on the next screens. It is recommended to accept the default settings. Click <Next> to continue.
8. Click <Next> on all screens until the Installation process commences.
9. After the installation the machine's site code will be shown, this is not important at this stage, click <Next> then <Finish>.
10. Auto update dialog box will be launched. Configure the Auto-Update settings dialog to allow your installation to be checked for available updates.

## 2. Connection

11. Fit the LCD module to the LCD connector on the RSK, so it lies between J1 and JA1. Ensure all the pins of the connector are correctly inserted in the socket.
12. Now connect the E8A to E8A header on the RSK using the ribbon cable.
13. Connect the E8A debugger to a spare USB port. The 'Found New Hardware' Wizard will appear. Please follow the steps below to install the drivers. Note that administrator privileges are required for a Windows™ 2000/XP machine.
14. Select option 'No, not this time' in "Found New Hardware" Wizard dialog, and Click <Next> button.
15. Ensure that option "Install the software automatically (Recommended)" is selected, and click <Next> button to install driver.
16. Click <Finish> button to close the wizard.

*Note: The Windows driver signing dialog may be displayed. Please accept the driver to continue.*

## 3. HEW Workspace

HEW integrates various tools such as compiler, assembler, debugger and editor into a common graphical user interface. To learn more on how to use HEW, open the HEW manual installed on your computer (Start Menu > All Programs > Renesas > High-performance Embedded Workshop > Manual Navigator).

17. Launch HEW from the Start Menu. (Start Menu > All Programs > Renesas > High-performance Embedded Workshop).
  18. In the "Welcome" dialog box: Verify "Create New Workspace" is selected. Click <OK>
  19. In the "New Project Workspace" dialog box: Set the "CPU Family" to "M16C", and verify the "Tool chain" is set to "Renesas M16C Standard". Select "RSKR8C2F" from the left hand pane.
  20. Enter a name for the workspace. The project name will be automatically completed with the Workspace name. You can change this name to 'Tutorial' if required. Click <OK>.
  21. On the "RSKR8C2F – Step 1" window: Select "Tutorial" and click <Next>.
  22. On the "RSKR8C2F – Step 2" window: Click <Finish>.
  23. On the Project Generator Information window: Click <OK>.
- The project that is created has two configurations. The Release configuration can be used for the final release code version. The Debug configuration allows modifications to the configuration for debugging.
24. Select the Debug build configuration in the left hand drop down list on the tool bar.

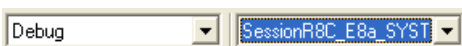


25. Click on the 'Build' icon to compile, assemble and link the project.



## 4. Programming and Debug

26. Ensure the 'SessionR8C\_E8A\_SYSTEM' session in the right hand drop down list on the tool bar is selected.

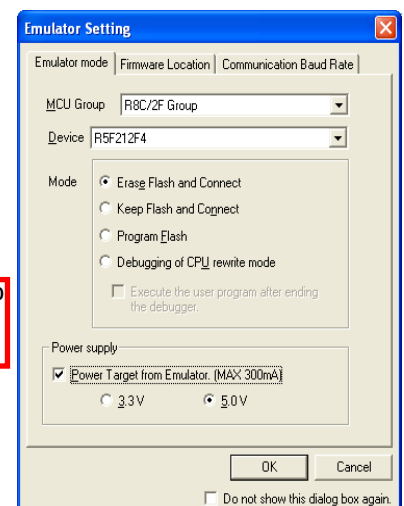


27. Click the <Connect> button on the debug toolbar

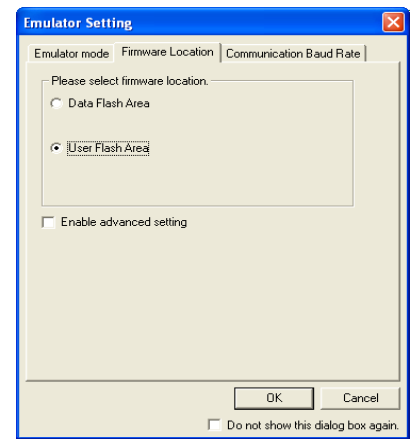


**Please note that the "Emulator mode" wizard shown here will only appear the FIRST time you connect to the target within a project. On subsequent connections the "Emulator setting" dialog will appear, please choose the same options to connect.**

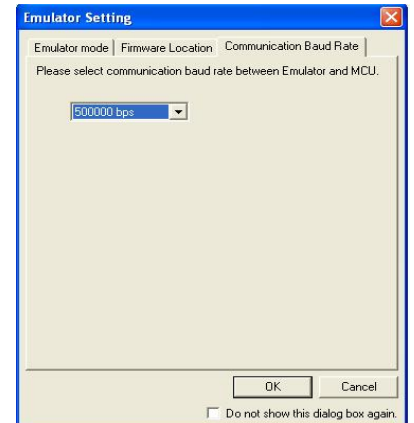
28. Select the correct Microcontroller group (R8C/2F illustrated).
29. Select the correct device (R5F212F4 illustrated).
30. Select 'Erase Flash and Connect'
31. If the E8A is to provide power to the CPU board, select 'Power Target from Emulator' and choose '5.0V' option.



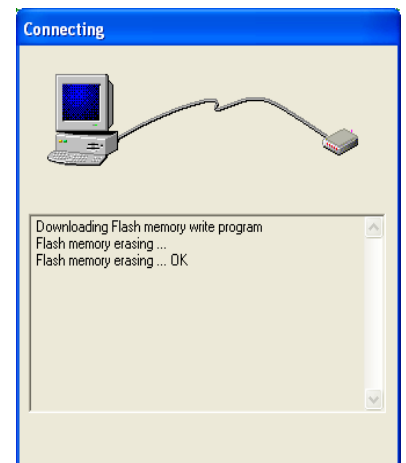
32. Choose 'User Flash Area' in 'Firmware Location' tab.



33. Choose communication baud rate "500000bps" and press <OK>.



34. The Flash Memory write program is downloaded and the output window in HEW will state 'Connected'.



35. Right click on the download module listed in the left hand pane and select 'Download'. The code will be downloaded to the microcontroller. This may take several seconds.

36. Click the <Reset – Go> button.

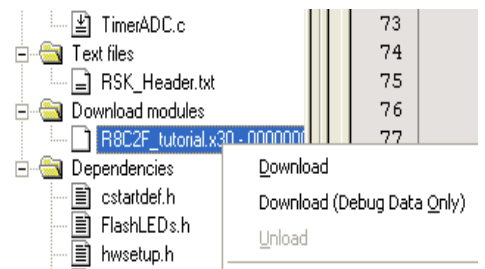


The code will run and you will see the LEDs flash on the board.

37. Click the <Stop> button.



The code will stop and the source code will be opened at the current program counter.



## 5. Next Step

After you have completed this quick start procedure, please review the tutorial code and sample code that came with the kit. You can add projects to the current workspace by selecting (Project > Insert Project) from the main menu. The tutorials will help you understand the device and development process using Renesas Development Tools.

The Hardware manual supplied with this RSK is current at the time of publication. Please check for any updates to the device manual from the Renesas internet site at: [www.renesas.com/renesas\\_starter\\_kits](http://www.renesas.com/renesas_starter_kits)

## 6. Renesas M16 Compiler

The version of the compiler provided with this RSK is fully functional but time limited. You have 60 days to evaluate the full product before the compiler will limit the code linker to 64k bytes. Full licensed M16 compiler versions are available from your Renesas supplier.

## 7. Support

Online technical support and information is available at: [www.renesas.com/renesas\\_starter\\_kits](http://www.renesas.com/renesas_starter_kits)

### Technical Contact Details

America: [techsupport.rta@renesas.com](mailto:techsupport.rta@renesas.com)  
Europe: [tools.support.eu@renesas.com](mailto:tools.support.eu@renesas.com)  
Japan: [csc@renesas.com](mailto:csc@renesas.com)

**Note on Autoupdate:** The Autoupdater is configured to automatically add itself to the Startup folder in the Windows Start Menu and use the registry defaults for access to the web. After restarting the machine the Icon will appear in the System Tray next to the clock. To change the settings or access Autoupdate, simply right-click on the icon and use the menu that appears.

© Renesas Technology Europe Ltd 2008.  
© Renesas Technology Corporation 2008.